

# Welding Construction

Crisler concourse decking June 2005



Masonry parapet wall installed June 2005



Prepped to place Plaza  
concrete June 2005



New stair framing  
June 2005

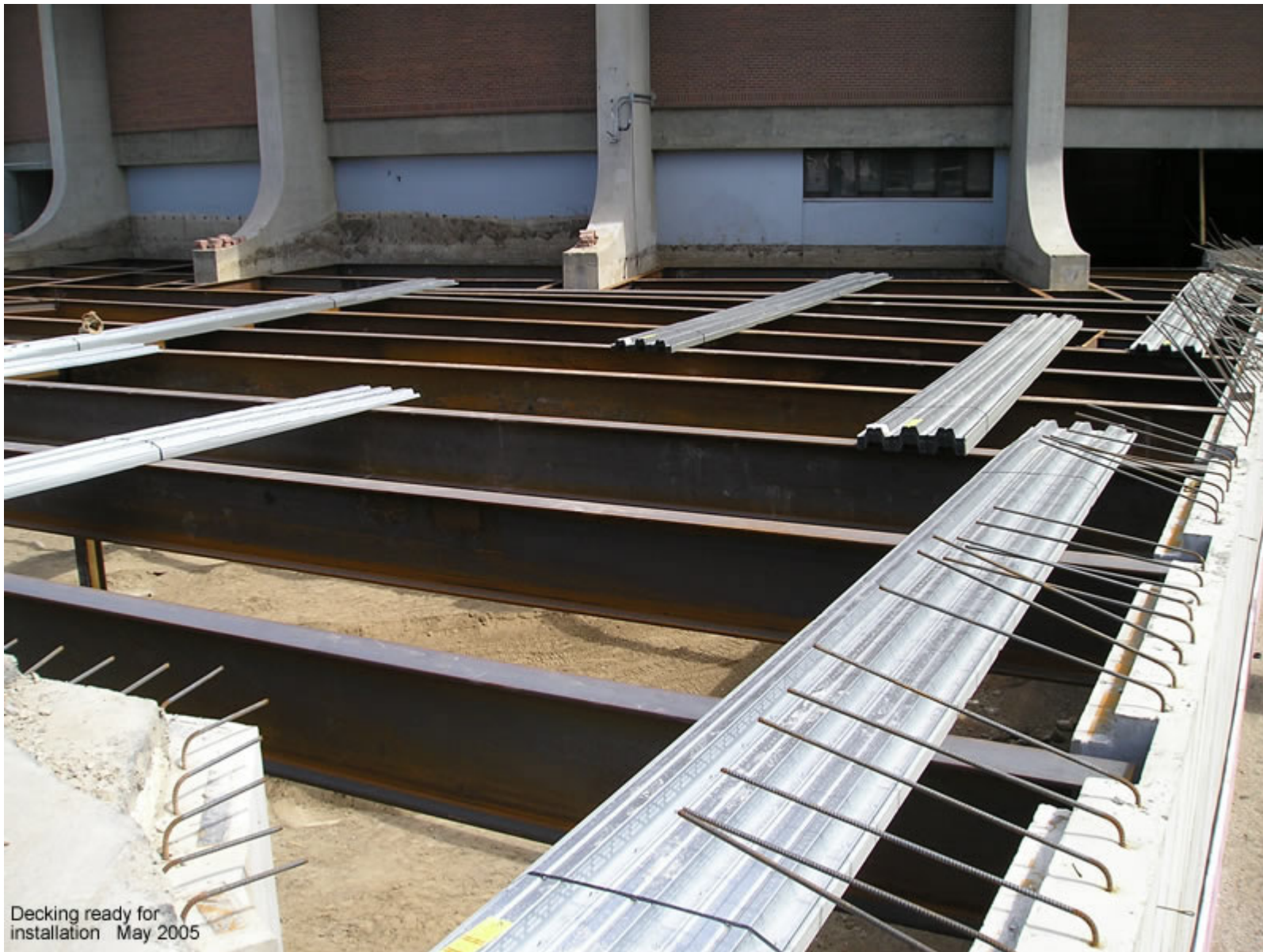


New steel framing in Crisler June 2005





Deck with stud bolts May 2005



Decking ready for installation May 2005



Framing through  
receiving door May 2005



Lobby area looking south - May 2005



Steel and deck complete  
May 2005



Steel erection May 2005



View from the west May 2005



















































